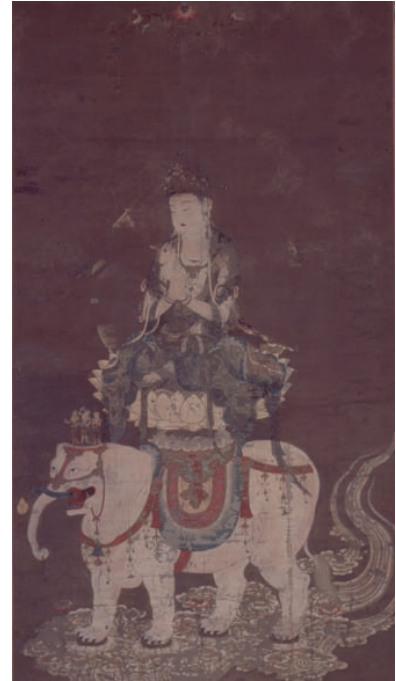


# The Hosomi Museum

The Hosomi Museum, based on the Hosomi Art Foundation, was granted permission from the Japanese Ministry of Culture in 1994 to operate as a private museum. It opened on March 22nd, 1998. The museum is located near Okazaki Park in the center of Kyoto, and is surrounded by numerous cultural institutions, including the Heian Shrine. The Hosomi Collection was begun by the Showa-period industrialist, HOSOMI Ryo (1901–1979), who was given the posthumous name, Koko-an by the chief priest of Tenryu-ji temple. With his discerning eye and independent sense for art, Ryo Hosomi amassed a collection of over 1000 works of Japanese art, 30 of which are registered Important Cultural Properties.

Covering all major genres and historical periods, the Hosomi Collection is highly valued both inside and outside of Japan.

The Hosomi Museum is centered around the Hosomi Collection and holds a wide range of exhibitions throughout the year. While some visitors may feel traditional Japanese art exhibitions are sometimes inaccessible, the Hosomi Museum strives to show Japanese art in an innovative and contemporary manner, bridging traditional aesthetics and modern design. It is hoped visitors will see traditional Japanese art in a new light.



Fugen Bosastu,  
Late Heian period



Ito Jakuchu,  
"Snake-gourds and Insects"  
Mid-Edo period

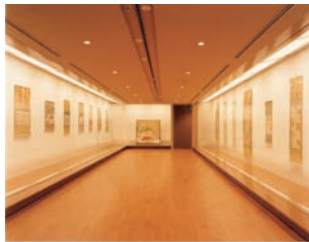
# Hosomi Museum Facility Guide



## NOTES:

- If Monday is a national holiday, all facilities will be open and closed the following day
- The museum may be closed irregularly for exhibition set up.

tel.075-752-5555 (Japanese only)  
For inquiries in English, please contact via the museum by e-mail at [hosomi@emuseum.or.jp](mailto:hosomi@emuseum.or.jp)  
or by fax at 075-752-5955  
[www.emuseum.or.jp](http://www.emuseum.or.jp)



## The Hosomi Museum

Designed by Oe Tadasu, the Hosomi Museum was awarded the 40th Architecture Association prize. The museum holds seasonal exhibitions centered around the Hosomi collection.

Open 10am-6pm , closed Mondays



## KOKO-AN TEA ROOM

Designed by NAKAMURA Soji in traditional Sukiya style, Koko-an is open daily for tea and sweets. More formal Tea events and ceremonies are planned all year round, along with private reservations.

Tea with Japanese sweets: 1000 yen

Open 11am-5pm , closed Mondays



## CAFE CUBE

Mixing Japanese style with contemporary design, CafeCube is located in the atrium square. Cafe bridal and private parties.

Open 11am-6pm, closed Mondays



## ARTCUBE SHOP

Art Cube Shop carries original museum goods, as well as Japanese-style items, accessories, and art books related to the museum.

Open 10am-6pm, closed Mondays

## NOTES :

Koko-an tea room and Cafprivate functions.  
Koko-an tea room and Cafmuseum admission.

# Hosomi Museum Floor Guide

Please try to keep noise to a minimum while in the exhibit rooms

